



Xcite™ Airmix® gun



35 years of experience

New sensations.... For new performances

ISO 9001



35 years of experience

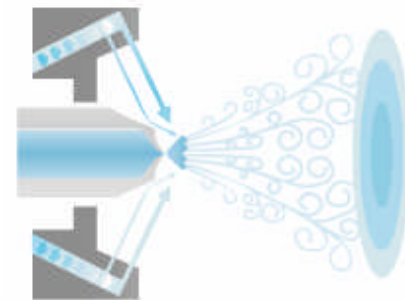
The Airmix® technology: the original one, 35 years of know-how!

Airmix® is trade marked and submitted by Kremlin Rexson since 1975. A world-recognized technology that had largely been successful, often copied but without equal...



35 years of experience

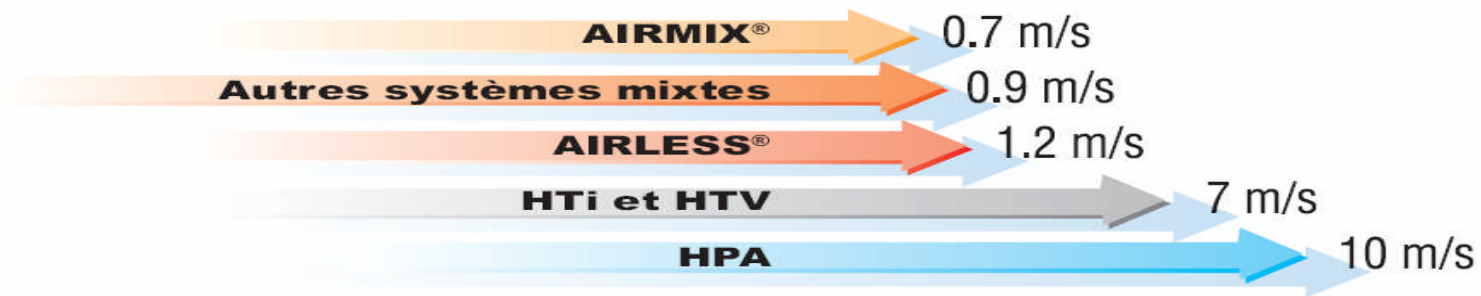
- **Airmix® invention**
- **The Airmix® technology**
 - With AIRMIX®, the additional air is injected **before the locus of atomization**, it results in a very stable fan and a perfectly even build on all sorts of parts to be sprayed.
 - With other medium pressure systems, the additional air is injected **into or beyond the locus of atomization**. It creates turbulent air flows, more overspray and less finish quality.



35 years of experience

■ Airmix® Technology

- The particles speed with AIRMIX® is much lower than with other systems.



- Paint velocity has a direct impact on performance: when the velocity is high, the overspray and bounce back are more important, which tends to quickly pollute the spray booth.
- AIRMIX® benefits :
 - Less air so energy savings
 - Less air means: less overspray, so the painter and the work station are more protected; the transfer efficiency is better

35 years of experience



Airmix® technology evolution

Kremlin Rexson knew how to keep its leader position thanks to the Airmix® technology and the investment dedicated to R&D. The **Xcite™** gun, it's like 35 years **experience** and **innovations** concentrated in a gun, an aircap and a tip.



BX3

BX5

BX8

BX016

BX36

BX56

BX86

VX14

VX114

VX24



1975

1985

1995

2003

2009



Xcite™ launching file

The Airmix® markets

Xcite™ launching file

Wood industry

- Desks
- Doors and windows
- Garden furnitures
- Parquet floor



Recommended products

- Solvent and Water-based products
- mono ou two-components
 - Stains
 - Lacquers
 - Varnishes
 - UV paints

The Airmix® markets

Xcite™ launching file

- **Metal**

- Rolling equipments
- Machine tools
- Barrels



Recommended products

- Solvent and Water-based products
- mono ou two-components
 - Lacquers
 - Varnishes
 - UV paints

The Airmix® markets

- **Aerospace**



- **Renewable energies**



Recommended products

- Solvent and Water-based products
- mono ou two-components
 - Varnishes
 - Lacquers
 - UV paints

DESCRIPTION

- The new Xcite™ Airmix® gun is the result of a long work in-depth,
- The quality of the components associated with the new Airmix® atomization aircap guarantee an outstanding finish.
- This new atomization allows to reduce the paint and air pressures, so it allows to save paints and work at lower pressures,
- It gives also the possibility to adjust the width of the fan without changing the tip, even without untight the aircap,
- The KREMLIN-REXSON engineers had particularly studied the gun ergonomics for more comfort and less fatigue,
Light trigger, reduction of the weight and SFX swivel fitting make it a touchstone on the market in terms of handiness and ease of use.

The Xcite™ gun is more than a work tool!

Xcite™ launching file

New sensations....

... for new performances

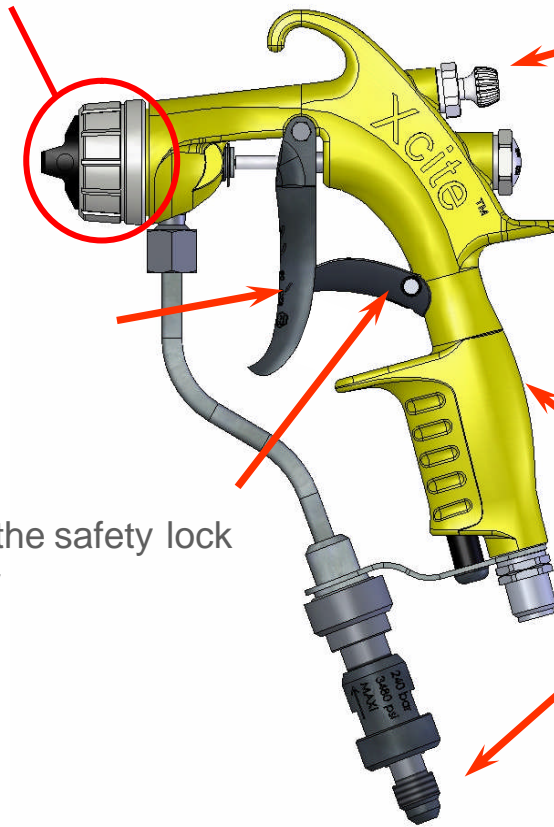
Unequaled comfort

Our best industrial designers particularly worked on the Xcite™ gun ergonomics. The initial specifications were the following ones:

- To minimize the RSI* risks
- To have a better visual control of the spraying
- To paint parts with complex shapes without fatigue
- To facilitate the cleaning of the gun

Unequaled comfort

- Very light and treated aircap ring
- Increased length of the « horns » to facilitate the rotation of the aircap even when the ring is tight = easy to adjust



- Ergonomic air adjuster to better control the adjustment

Light and ergonomic trigger
= More comfort

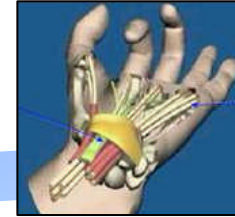
New design of the safety lock
= more security

Ergonomic design for comfortable fit and feel associated with a swivel fitting to reduce the fatigue and optimize the comfort

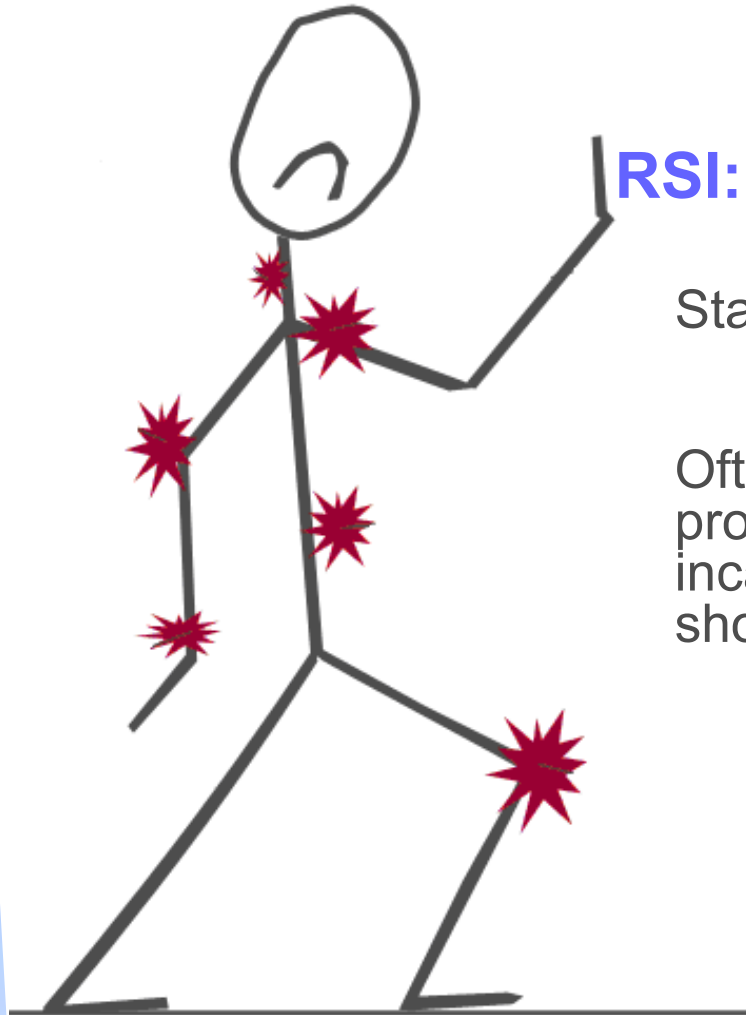
Weight
495 gr*

* Without swivel fitting

Unequaled comfort



Xcite™ launching file



RSI: Repetitive Stain Injury

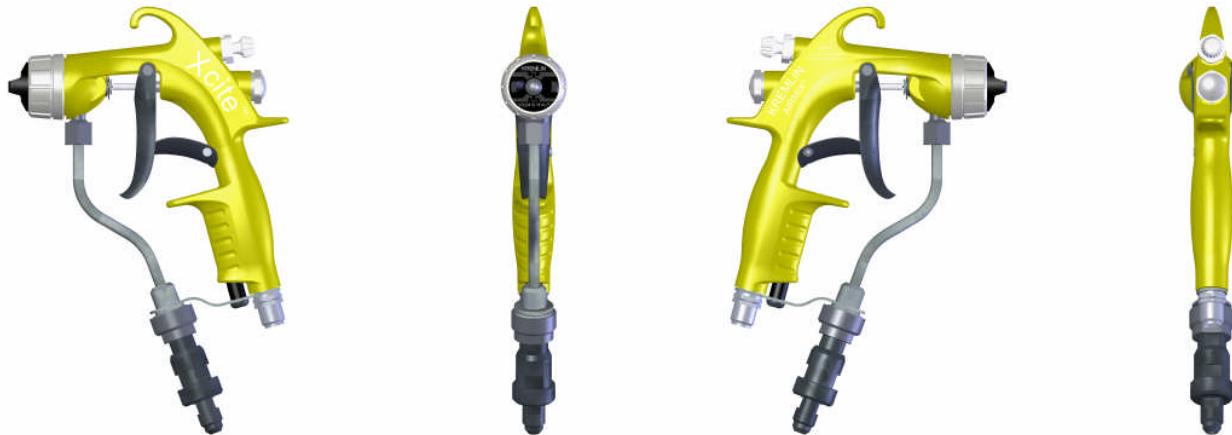
Stand for 70% of the professional injuries.

Often due to repetitive movements, they can provoke annoying pathologies, even incapacitating ones : lumbagos, elbow and shoulder tendonitis...

Unequaled comfort

The **Xcite™** design associated with the **SFX swivel fitting** allows to consistently reduce the RSI:

- The user fatigue is reduced
- Productivity is increased
- Comfortable fit, handiness and light trigger pull
- Total visual control of the spraying : aircap diameter reduced
- Uncluttered design : easy to clean

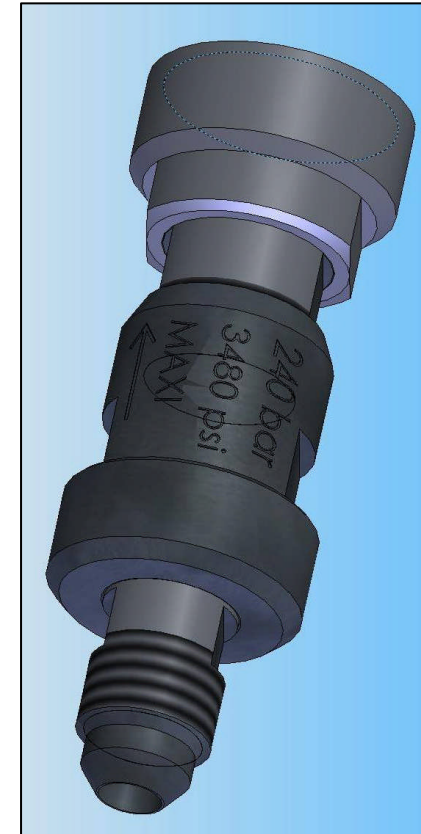


Unequaled comfort

The Xcite™ gun is equipped with the new **SFX Airmix® swivel fitting...**

- Max Product pressure : 240 b
- Stainless steel
- F fitting for Xcite & MVX product tube
- M fitting ½ JIC for product hose
- Ball bearing rotating system
- GT seal

...for ease of use and an **outstanding handiness !!**



SFX swivel fitting

S : Swivel F : Fitting X : Airmix®

Unequaled comfort

- 2 fingers trigger :
 - New ergonomy for more comfort
 - Trigger pull force reduced : **less fatigue even at 200 bar!**

Trigger pull force Xcite

	gr	N	Lbs	Xcite vs MVX
<i>Xcite 120 b</i>	1600	15.7	3.53	-20%
<i>Xcite 200 b</i>	1900	18.6	4.19	-32%

- Safety lock :
 - New ergonomy for better handling
 - No possibility of unintentional pulling of the trigger, no risk of “skin injection”



Unequaled comfort

- 16% lighter than the old MVX generation (495g against 575g into the same configuration)



Modèles	XCite	MVX
Poids* (g)	495	570

* Without swivel fitting

- We keep close to the lightweight gun of our competitors and preserve at the same time our hardness,
- We use nicked brass and the stainless still thickness is more important to improve the shelf life whereas the competitors only use aluminium and fine stainless still thickness.

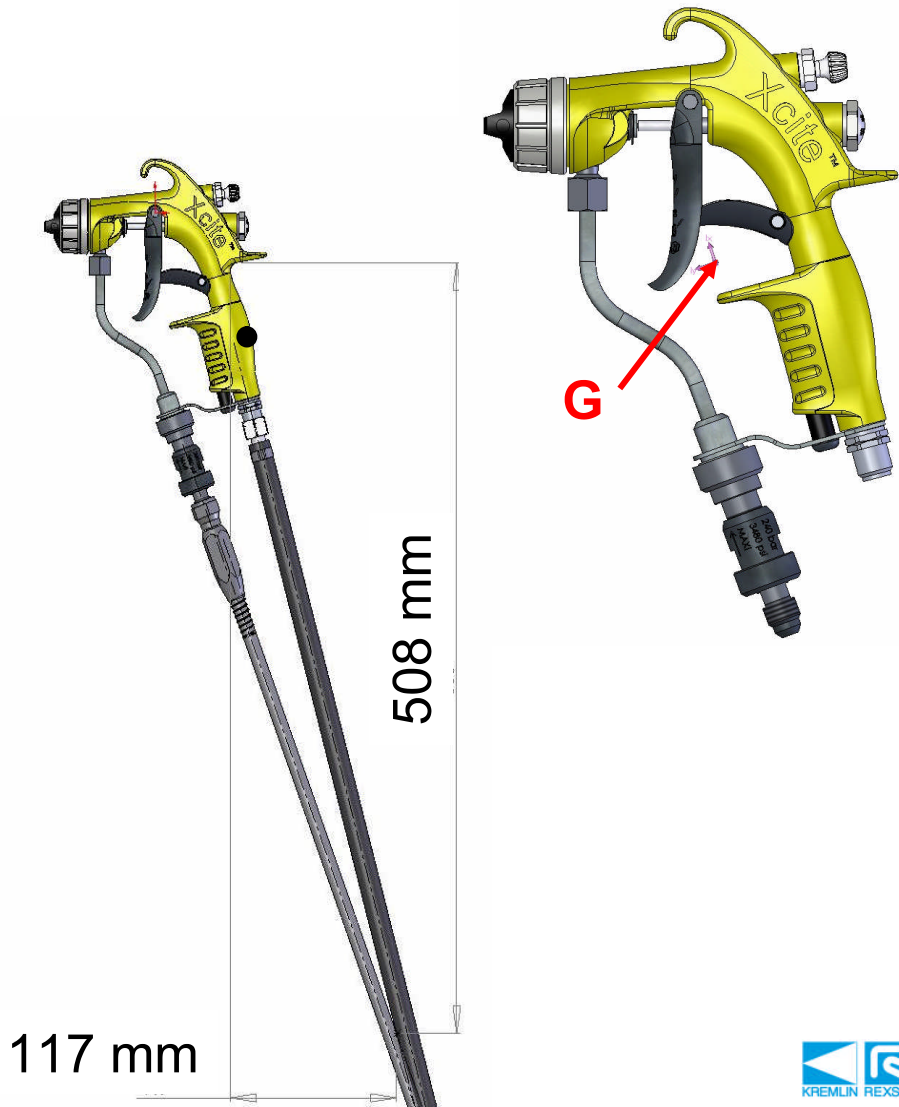
Unequaled comfort

- Better gun balance :

Center of gravity position had been modified: at the user hand level, not forward the gun

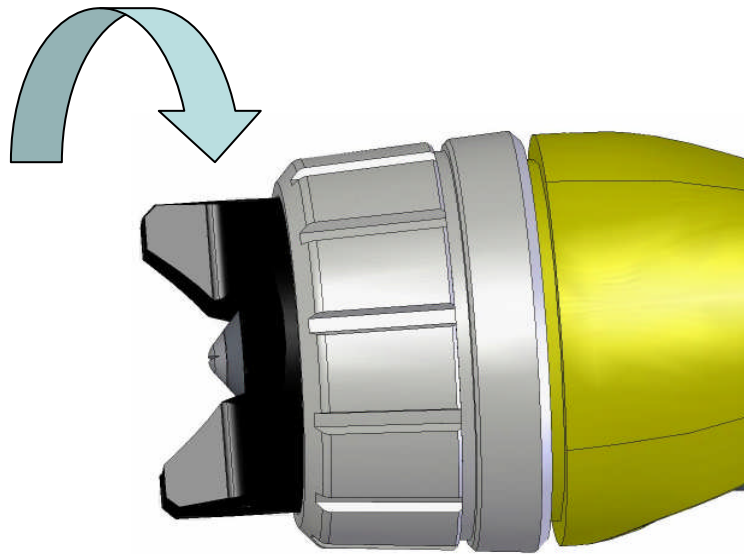
- New junction point of the hoses for un better comfort:

The meeting point of the hoses is at the elbow level to improve the handiness of the gun



Unequaled comfort

- The increased length of the « horns » associated with the “EZ adjust” technology allows the easy aircap rotation even when the ring is tight



New manuals

- Because we are sensitive to the environment, the **manuals** will be from now engrave **on a CD** to avoid the waste of printing paper.
- The new **interactive concept of manuals** will allow you to quickly answer to all your questions.



New manuals

- The gun packaging had also been reconsidered. The gun is now protected with two foams. The packaging is in recyclable cardboard material.



New sensations....

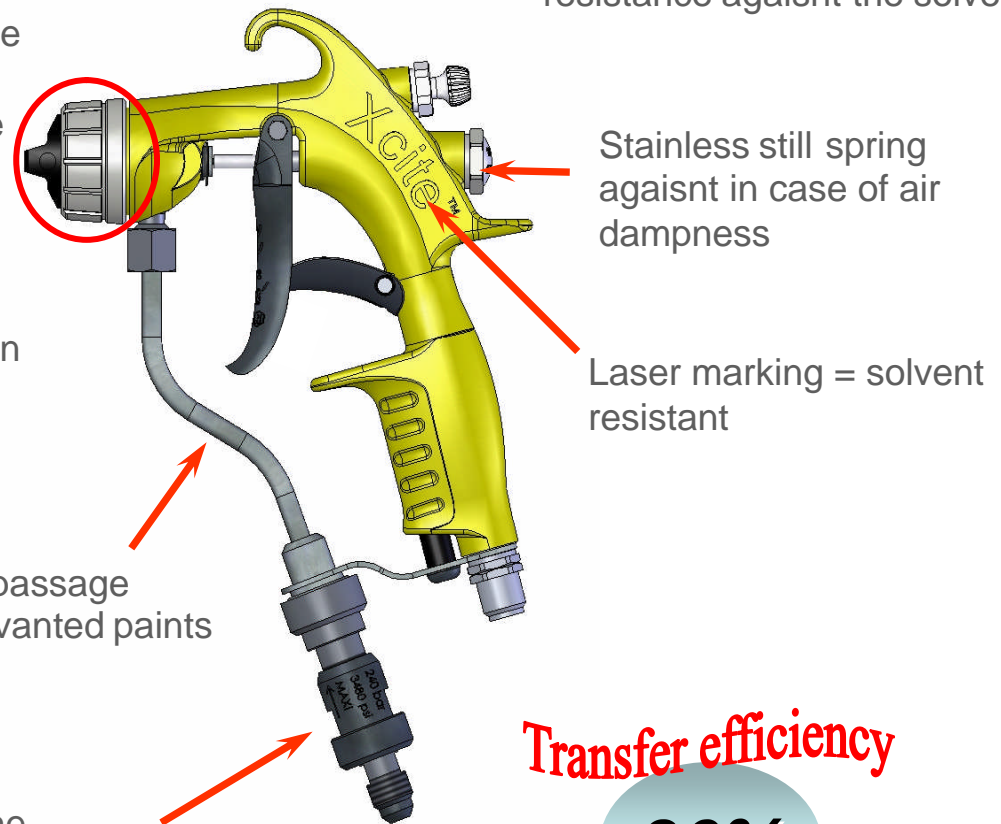
... for new performances

Technical side

Outstanding performances

- Fine atomization improved
- Double seal : security against the leakage
- Different seat depending of the paint type
- Tulip-shaped fan: increased productivity
- VX24 aircap with EZ adjust technology: Ease of use, the aircap can be rotated even when the ring is tight

New body anodisation quality: the thickness is 5 times more important to improve the gun hardiness against the shock and the resistance against the solvent



Stainless steel spring against in case of air dampness

Laser marking = solvent resistant

Stainless steel product passage for water-based and solvanted paints

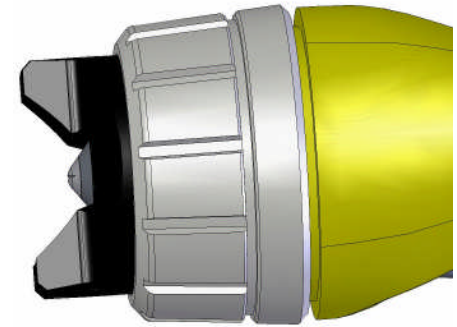
Filtration capacity improved to reduce the production stopping

Transfer efficiency

86%

Outstanding performances

- **New VX24 (KHVLP) aircap - 132.720.020 :**
 - Fine atomization improved
 - Anodized aluminium aircap : interesting for water based products
- The best transfer efficiency of the non electrostatic spraying systems !!



Transfer efficiency
Transfer efficiency

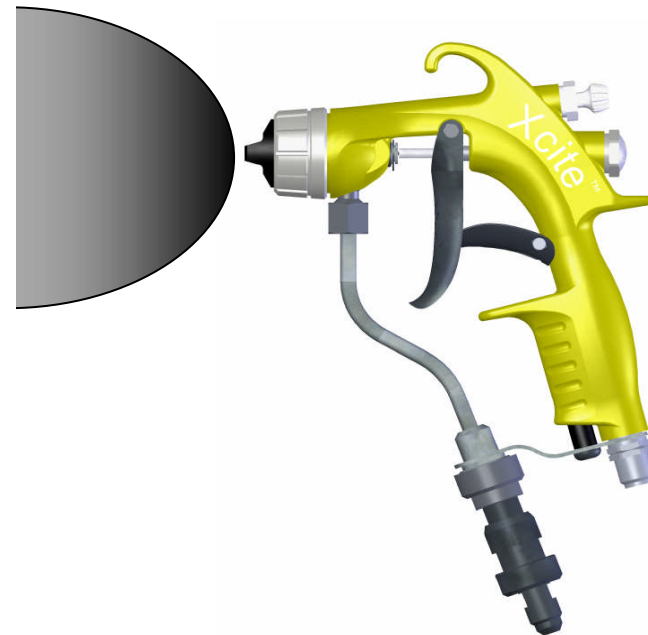
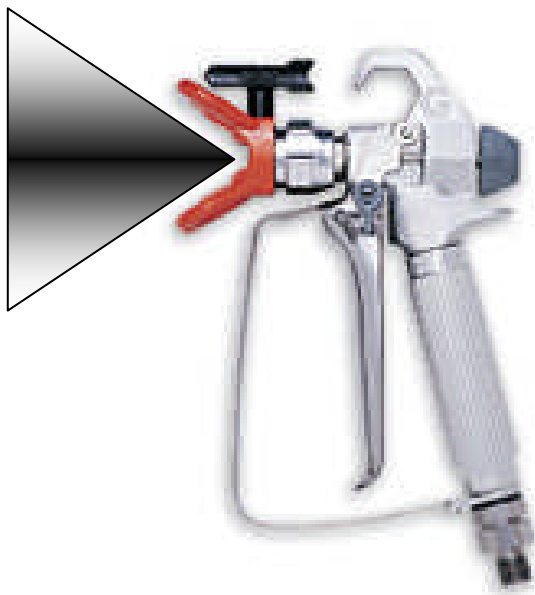
86%

Outstanding performances

- **The tulip**

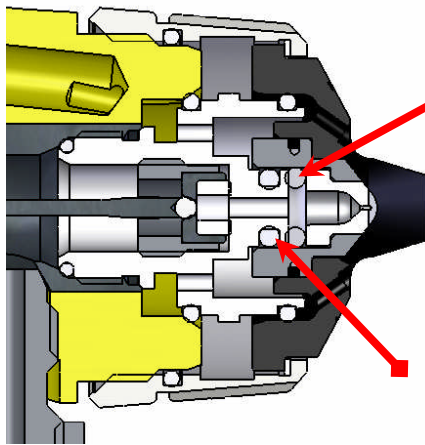
The tulip-shaped spraying allows a homogeneous dispersion of the paint in the fan.

Moreover this shape increasingly increase the transfer efficiency, in comparison with the triangle-shaped of the Airless technology.



Outstanding performances

- Double security : against the leakage!

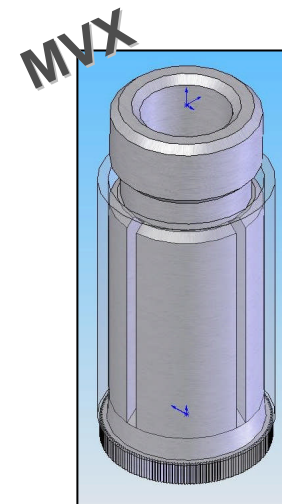
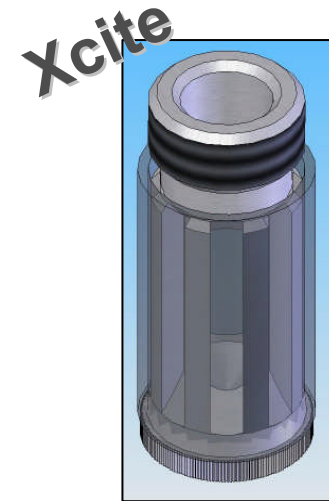


Seal tip in Teflon:
Universal

Seat-holder assembly seal in
Chemraz: avoid the back effect of
the paint in the air passage

- Filtration quality improved to avoid the clogged tips
- Filtration capacity increased from 400%!!

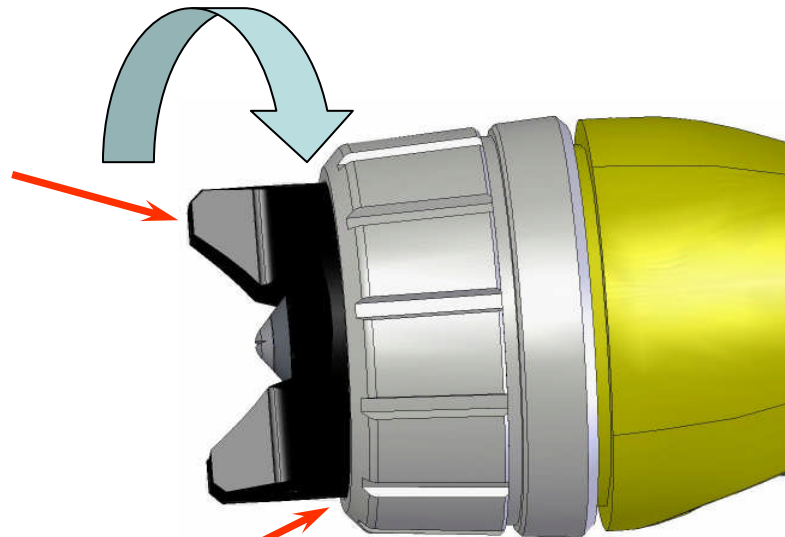
For more productivity !



Outstanding performances

- The VX24 aircap associated with « EZ adjust » technology allow to orientate the aircap during the production without untight the ring = increased productivity

Increased length of the
« horns » = ease of use

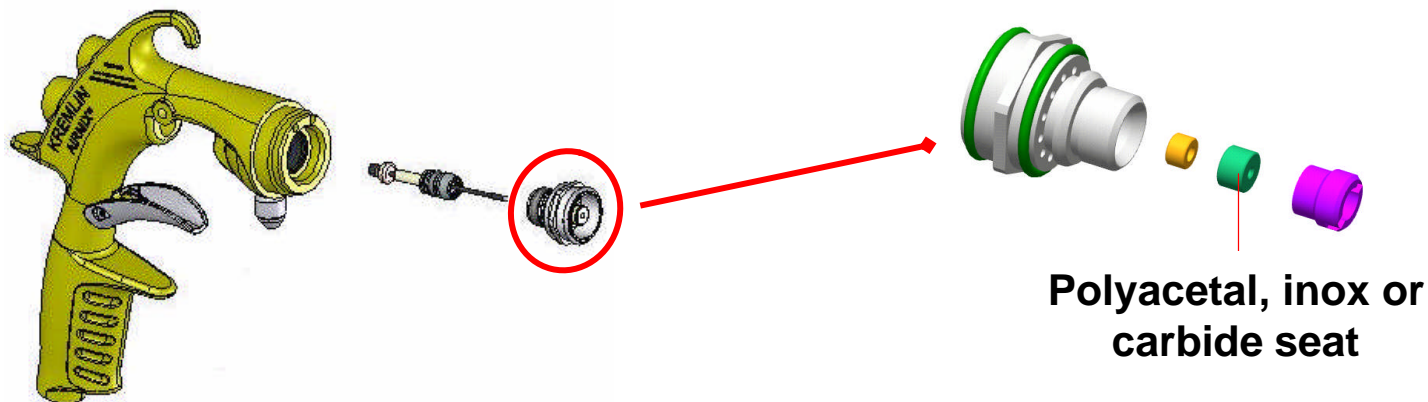


« EZ adjust » seal

Outstanding performances

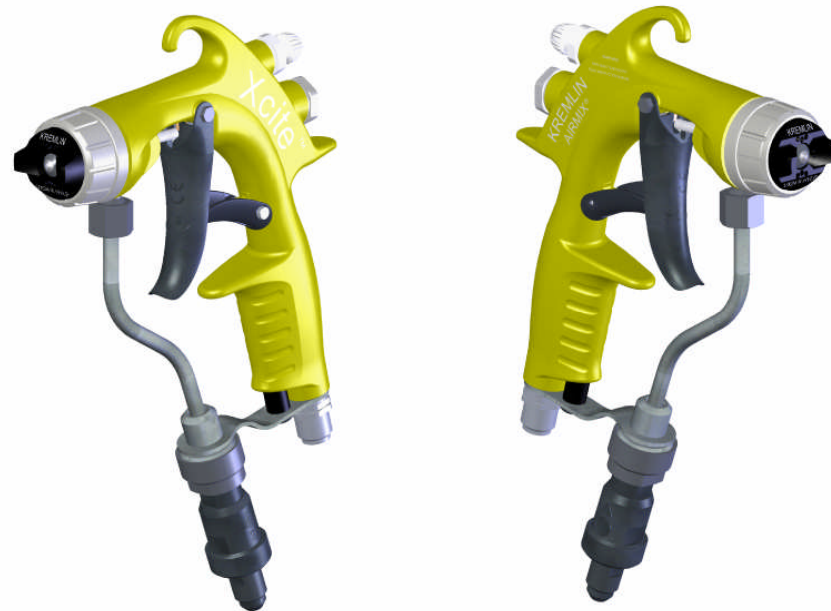
- **Two versions of guns...**
 - **120 b : reference 129.720.100**
 - Stainless steel seat (for the majority of the products applied on the market)
 - **200 b : référence 129.720.200**
 - Carbide seat (for aggressive paints)

Option : polyacetal seat for very fluid products



Outstanding performances

- **Quality of the components**
 - New body anodisation (20µm thickness against 5µm for the MVX)
 - All the engraving are done with laser : aircap, body, trigger and swivel fitting : not frightened by the solvent!

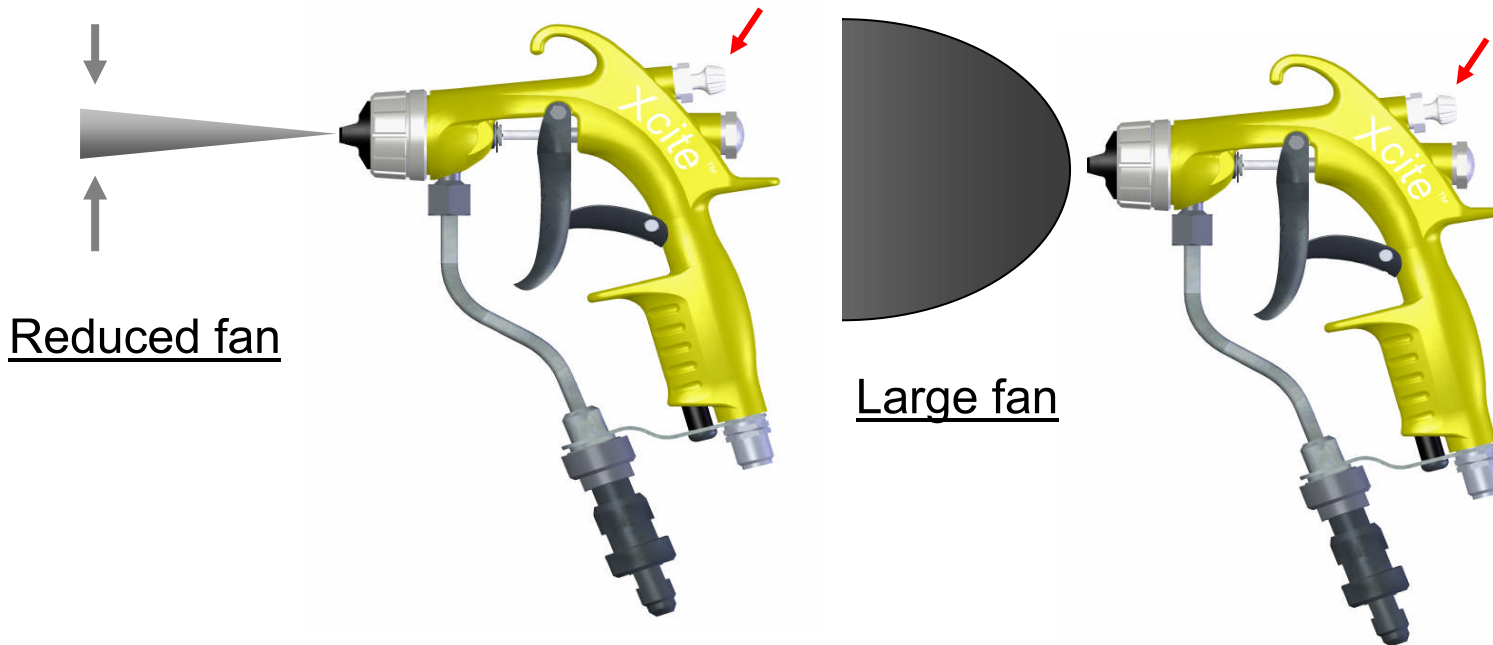


Outstanding performances

- **Larger amplitude of the width fan adjustment :**

The reduction of the width is more effective : from 24 cm to 13 cm at 70b = 5% more effective than the last MVX generation!*

This optimisation allows to work economically on a larger choice of parts

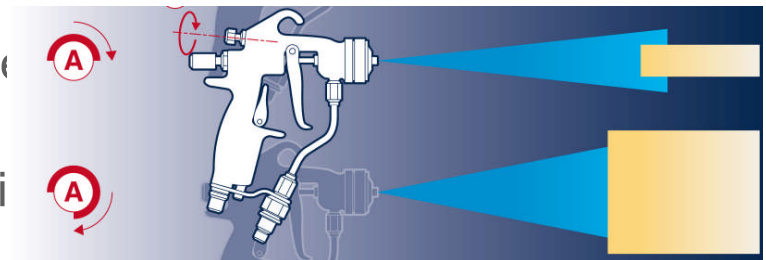


Outstanding performances

New fan width adjustment

- The adjustment of the **fan width** has been improved (2 ¼ knob instead of a ¾ one for the MVX)
- It allows a fine adjustment more efficient for:
 - **Important product savings** (width of the fan adapted to the parts to paint),
 - **Time savings** : no need to change the ti

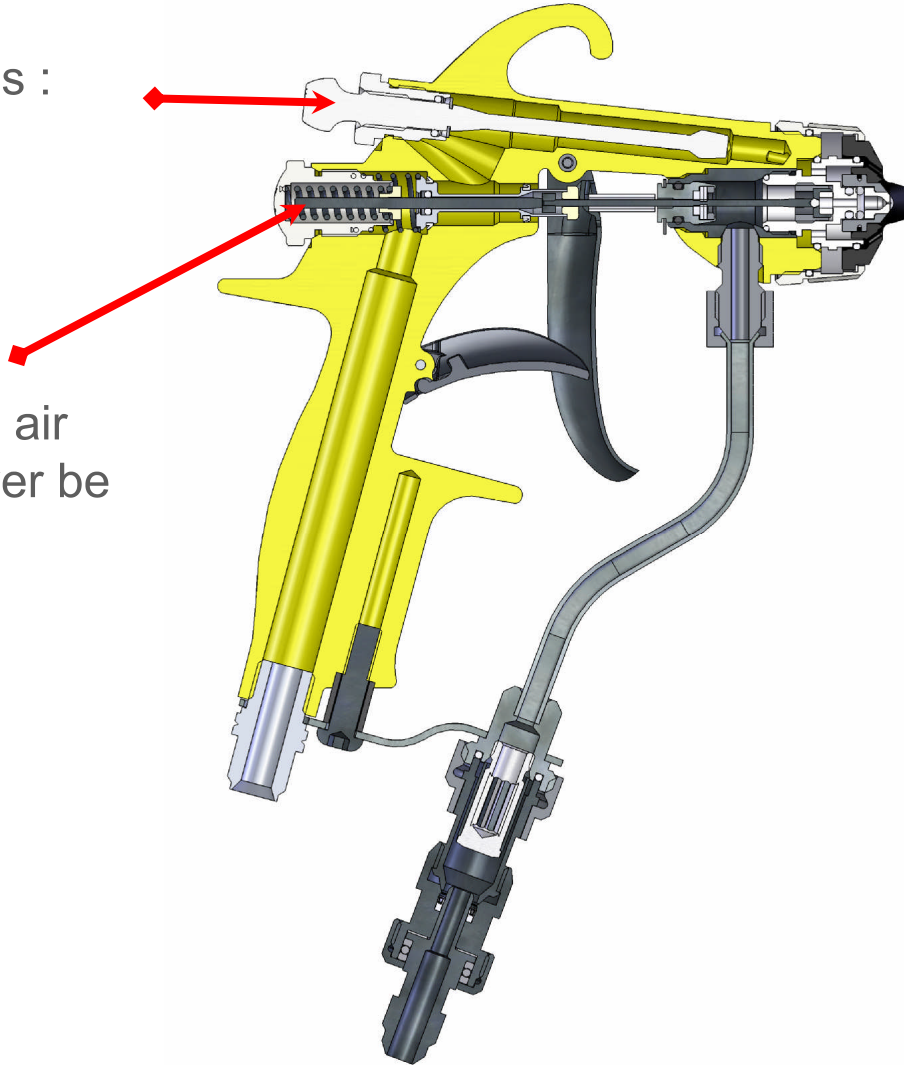
Reduction fan symbol



Outstanding performances

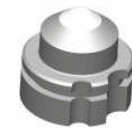
Needle air in nickel-plated brass :
robust conception

Air valve and product springs
in stainless steel: whatever the air
dampness, the springs will never be
rusty!



Outstanding performances

- A large choice of « Fine Finish » tips for your applications with solvent paints



Xcite™ launching file

Size	mm/inches	Water output (l/min)				Marking on filter Gun Pump	
		Pressure (bar)					
		35 bar	70 bar	120 bar	200 bar		
02	0.15/0.006"	0.07	0.10	0.13	0.17	4	2
03	0,18/0.007"	0.11	0.15	0.20	0.26	4	2
04	0,23/0.009"	0.16	0.22	0.29	0.38	4	2 ou 4
06	0,28/0.011"	0.23	0.33	0.43	0.57	4	4 ou 6
09	0,33/0.013"	0.32	0.45	0.59	0.77	6	6 ou 8
12	0,38/0.015"	0.42	0.60	0.79	1.03	6	8 ou 12
14	0,41/0.016"	0.51	0.72	0.94	1.23	12	8 ou 12
18	0,48/0.018"	0.67	0.95	1.24	1.63	12	12
20	0,50/0.019"	0.75	1.06	1.39	1.82	12	12
25	0,56/0.022"	0.94	1.33	1.74	2.28	12	15
30	0,61/0.024"	1.13	1.60	2.09	2.74	12	15
40	0,72/0.028"	1.54	2.18	2.85	3.73	12	20
45	0,76/0.029"	1.68	2.38	3.12	4.08	12	20

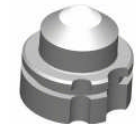
Maximum theoretical fan width (cm) at 25 cm (10 ") - VX24 Aircap

9	12	17	21	25	29	33	37	44
02.034	02.054							
03.034	03.054	03.074						
04.034	04.054	04.074	04.094	04.114				
06.034	06.054	06.074	06.094	06.114	06.134	06.154		
09.034	09.054	09.074	09.094	09.114	09.134	09.154		
		12.074	12.094	12.114	12.134	12.154	12.174	
	14.054	14.074	14.094	14.114	14.134	14.154	14.174	
					18.134	18.154	18.174	
		20.074	20.094	20.114	20.134	20.154	20.174	20.194
					25.134			
				30.114	30.134	30.154	30.174	30.194
							40.174	
				45.114		45.154	45.174	45.194

Number engraved on the tip

Outstanding performances

- A large choice of « Xtra™ Fine Finish » tips for your application with water-based products



Size	mm/inches	Water output (l/min)				Marking on filter	
		Pressure (bar)				Gun	Pump
		35 bar	70 bar	120 bar	200 bar		
04	0,23/0.009"	0.16	0.22	0.29	0.38	4	2 ou 4
06	0,28/0.011"	0.23	0.33	0.43	0.57	4	4 ou 6
09	0,33/0.013"	0.32	0.45	0.59	0.77	6	6 ou 8
12	0,38/0.015"	0.42	0.60	0.79	1.03	6	8 ou 12
14	0,41/0.016"	0.51	0.72	0.94	1.23	12	8 ou 12

Maximum theoretical fan width (cm) at 25 cm (10 ") - VX24 Aircap

9	12	17	21	25	29	33	37
04.032	04.052	04.072	04.092	04.112			
06.032	06.052	06.072	06.092	06.112	06.132	06.152	
09.032	09.052	09.072	09.092	09.112	09.132	09.152	
		12.072	12.092	12.112	12.132	12.152	12.172
	14.054	14.072	14.092	14.112	14.132	14.152	14.172

Number engraved on the tip

A technology validated on the field

- Field tests

- Carried out in real conditions on a customer panel selected in wood and metal markets

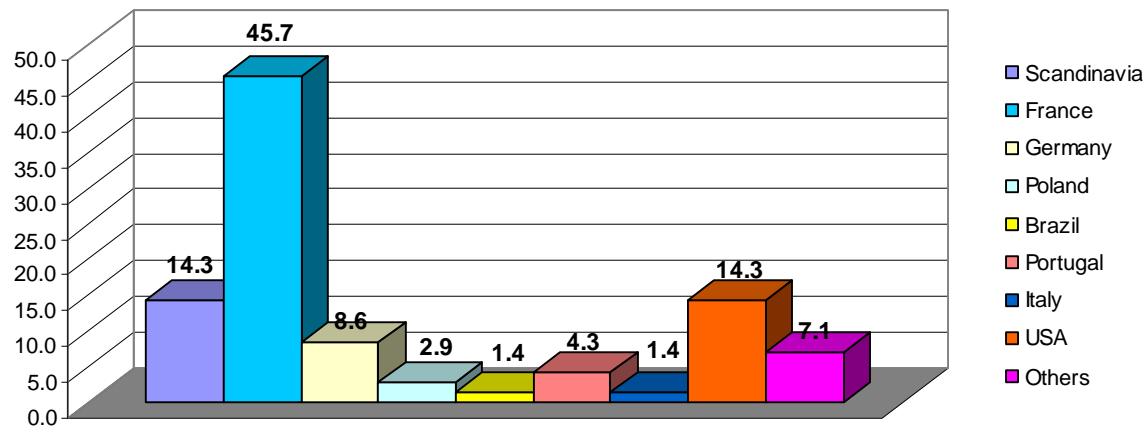


- Pictures from DECOTEC, one of our test customers: 120b Xcite gun tested at 70 b paint pressure and 0.8 b pressure on water-based paint

A technology validated on the field

- 2 phases led in parallel :
 - Tests to evaluate and validate the technical aspect
 - Tests to validate the design aspect
- A representative number of guns tested in different areas of the world :

Prototype tests dispersion for each country (%)

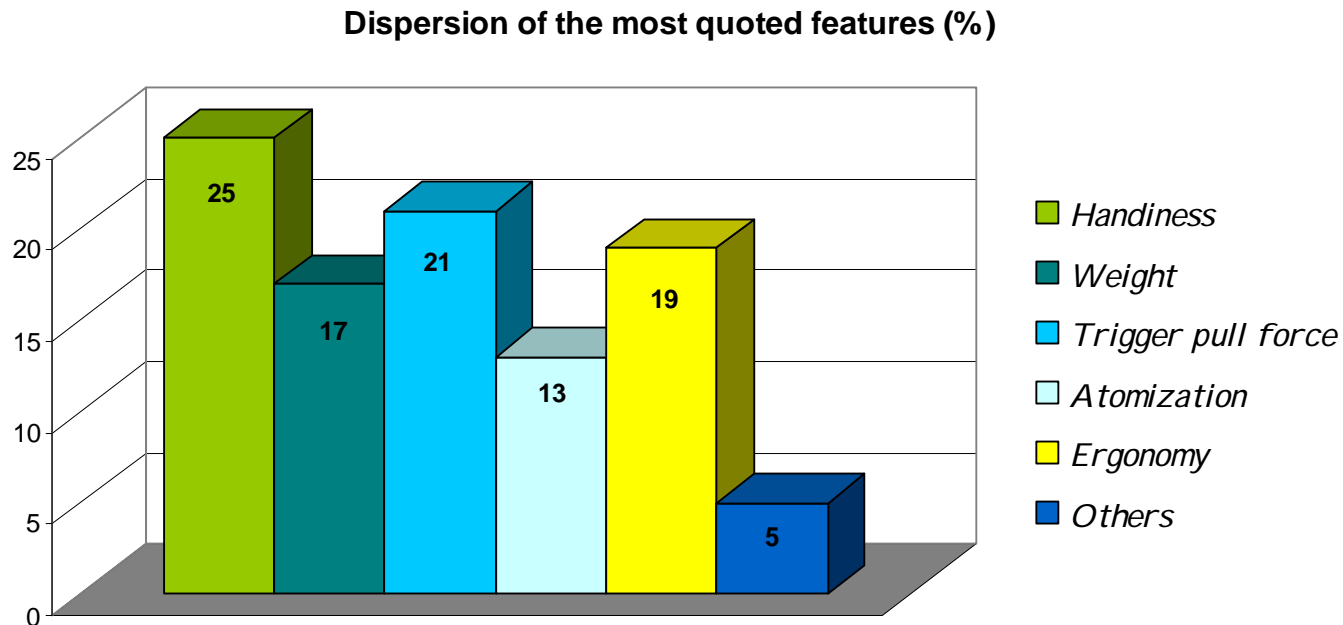


A technology validated on the field

To the question :

« *What feature(s) of this product were you most impressed with?* »

The features that had been most quoted were :



Outstanding performances



- The **Xcite™** gun is complying with the directive 94/9/CE :

CE : european conformity

II : group II 2 : category 2

Surface equipment working in a environnement where explosive atmospheres due to gases, vapours, mists or air mixed with dusts is likely to occur.

G : gas

- **Reminder:** at least one of the hoses must be conductive. We advise to use Kremlin range of hoses.

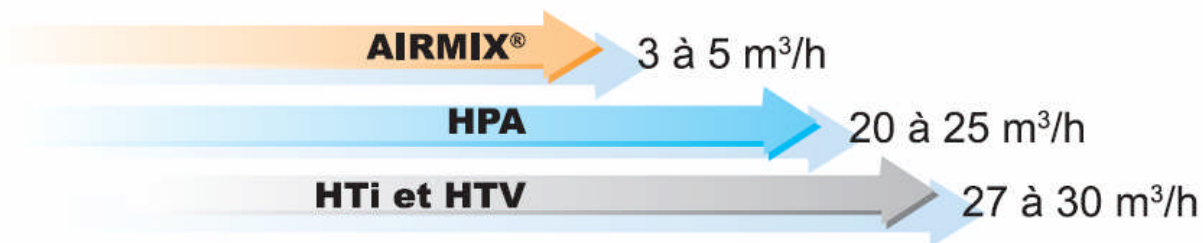
New sensations....

... for new performances

Financial side

A quick payback

- **The Airmix® technology**
- Paint velocity has a direct impact on performance: when the velocity is high, the overspray and bounce back are more important, which tends to quickly pollute the spray booth.
- The particles speed with AIRMIX® is **much lower than with other systems.**



A quick payback

- A high transfer efficiency which allow to :

Transfer efficiency

86%

- Obtain a clean work environment
- Reduce spray booth maintenance: reduce paint booth slurry and fouling
- Protect the user
- Protect the environment : VOC emissions reduced
- High level of paint coat uniformity: high-quality coverage and regular thickness
- Significant paint savings

A quick payback

Taux de transfert
86%

Working time/day: 6 h
Flow rate: 0.45 l/min at 90 b (tip 09)
Work days/year: 220 days
Paint cost for one liter: 8 €
Paint cost/year: 285 120 €

Transfer efficiency

MVX	81%
Competition	82%
Xcite™	86%

	Xcite™ VS MVX:	Xcite™ Vs Competition
Annual earnings	14 256 €	11 405 €

Xcite™ price*	679 €
---------------	-------

ROI - Xcite™ gun replacing the MVX gun	< 3 mois
ROI Xcite™ gun replacing COMPETITION	< 4 mois

Add 4 % transfer efficiency means :
4% productivity more
or 4% paint savings

With a superior application quality

Xcite™ launching file

*According the price list 01/09/09



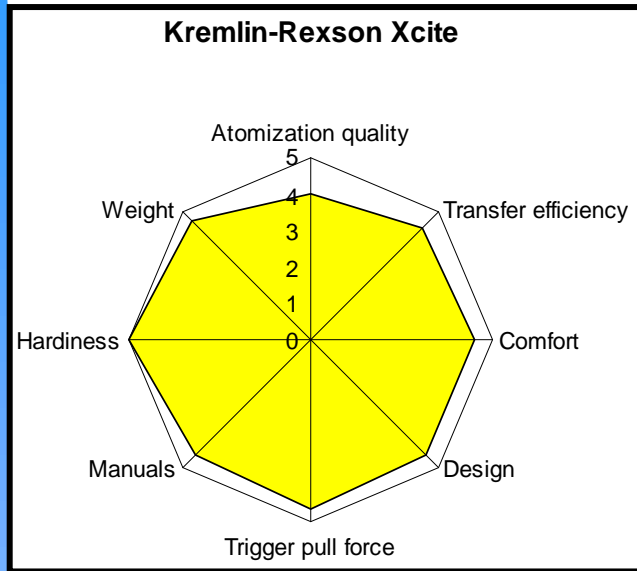
New sensations....

... for new performances

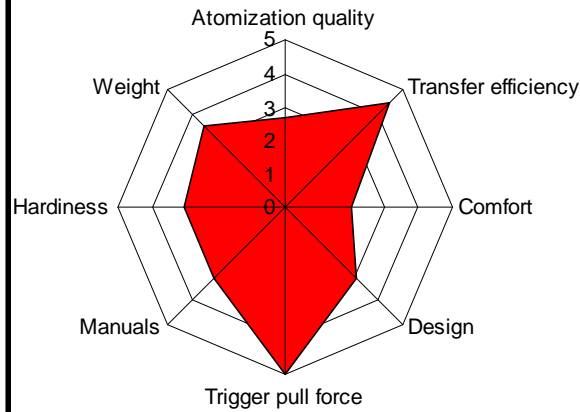
Faced the competition

The competition

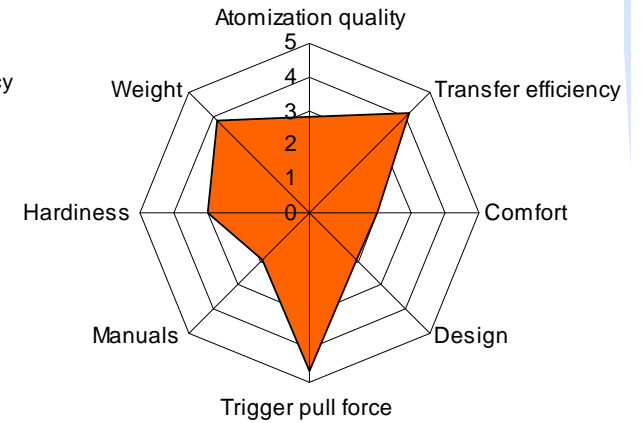
Xcite™ launching file



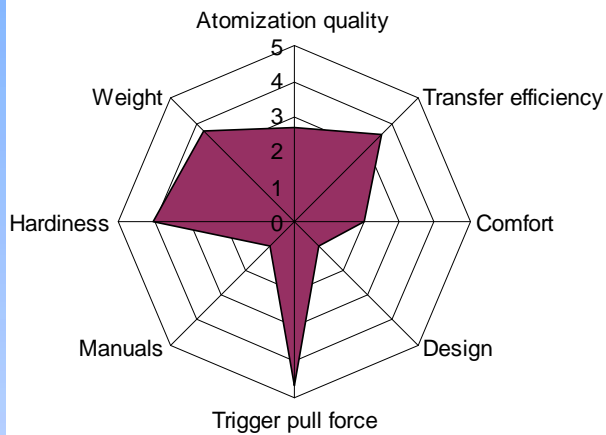
CATechnologies Bobcat



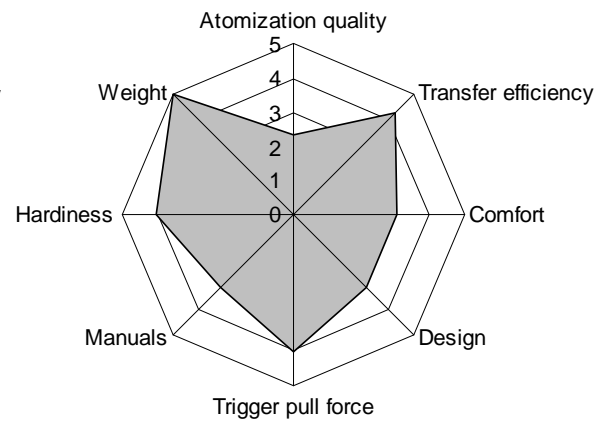
Binks AA1500



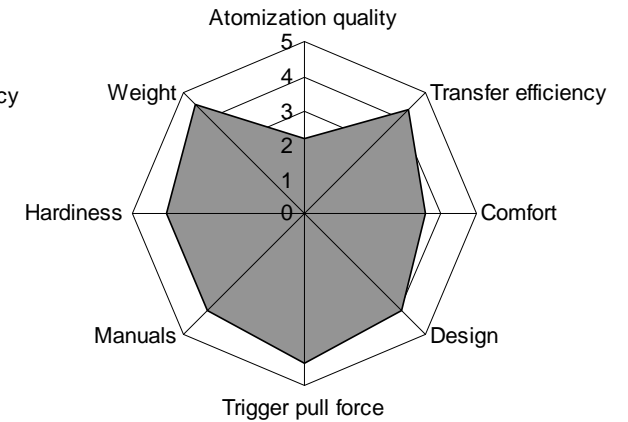
Optima 2100



Wagner GM4100



Graco G15















Note: the atomization quality is defined according to the atomization softness, the charge repartition, the fan width reduction and the shape of the fan.






The competition

Xcite™ launching file

						
Version	Xcite™ 	AA1500 	G15 	Bobcat AAA 	AC 4100 	2100 
Product/Air Fittings	M $\frac{1}{2}$ JIC	M $\frac{1}{4}$ NPS	M $\frac{1}{4}$ NPS	M $\frac{1}{4}$ NPS	M $\frac{1}{4}$ NPS	M $\frac{1}{4}$ NPS
Max Product pressure (b)	120 / 200	104	105 / 240	122	160 / 250	250
Max air pressure (b)	6	7	7	7	8	7
Max Temperature (degrees)	50	-	43	-	55	60





The competition

Xcite™ launching file

			
Version	Xcite™	AA1500	G15
Air valve	En ligne	Dissociée	En ligne
Weight (gr)	495	515	470
Trigger pull force	1600 gr 3.53 Lbs	1600 gr 3.53 Lbs	1700 gr 3.75 Lbs
Product/Air Fittings	3.55	4.25	3.45
Optimal air pressure	0.8 bar	1.5 bar	1.4 bar
Strengths	<ul style="list-style-type: none"> • Atomization • Trigger pull force • Weight • Low air pressure • Ergonomy • Hardiness 	<ul style="list-style-type: none"> • Trigger pull force • Weight 	<ul style="list-style-type: none"> • Time to dismantle • Weight
Weaknesses		<ul style="list-style-type: none"> • Atomization • Comfort • Fan width reduction • Difficulty to put the tip in the head (too small) • Reliability of the way the needle is fixed 	<ul style="list-style-type: none"> • Atomization • Difficulty to dismantle the needle stop sleeve • A lot of parts in Aluminium (Poor reliability) • Aircap indexing is not precise • Hardiness

The competition

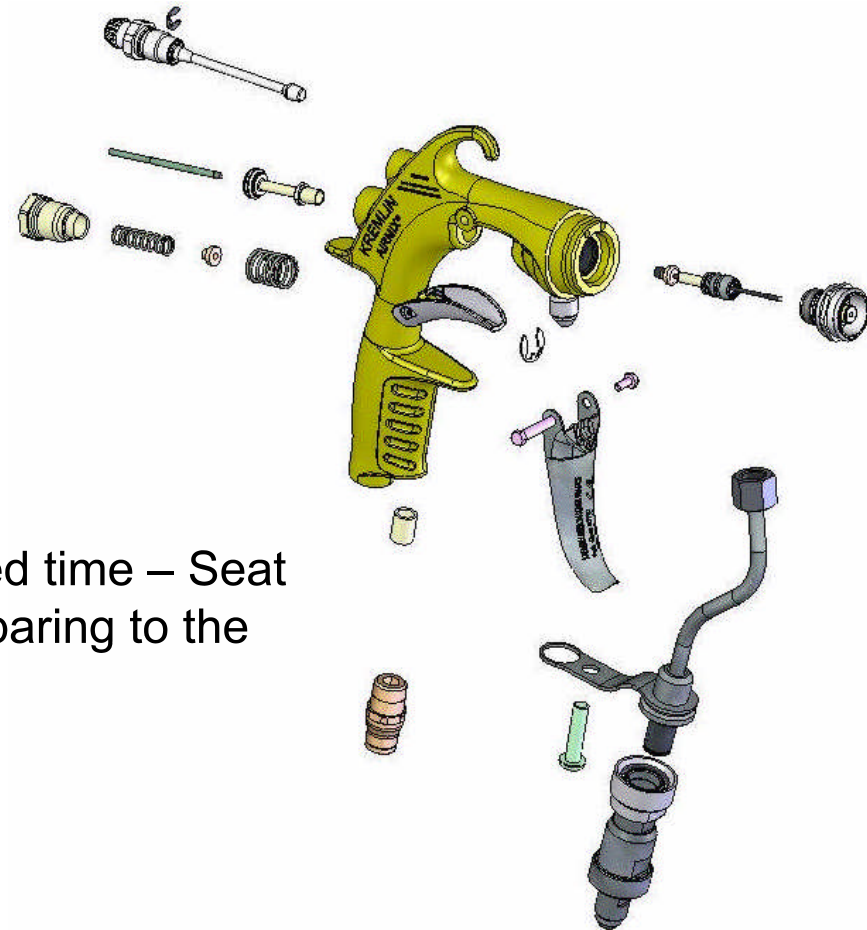
Xcite™ launching file

				
Version	Xcite™	Bobcat AAA	AC 4100	2100
Air valve	En ligne	En ligne	En ligne	Dissociée
Weight (gr)	495	553	422	537
Trigger pull force	1600 gr 3.53 Lbs	1500 gr 3.31 Lbs	1800 gr 3.97 Lbs	1600 gr 3.53 Lbs
Product/Air Fittings	3.55	4.21	3.51	4.55
Optimal air pressure	0.8 bar	1 bar	1.3 bar	1.6 bar
Strenghts	<ul style="list-style-type: none"> • Atomization • Trigger pull force • Weight • Low air pressure • Ergonomy • Hardiness 	<ul style="list-style-type: none"> • Trigger pull force 	<ul style="list-style-type: none"> • Weight • Trigger pull force 	<ul style="list-style-type: none"> • Hardiness
Weaknesses		<ul style="list-style-type: none"> • Atomization • Comfort/Not fit the hand correctly • Trigger too small • Weight 	<ul style="list-style-type: none"> • Atomization • Gun too small • Fragile Needle stop sleeve (in plastic) 	<ul style="list-style-type: none"> • Atomization • Comfort • Transfer efficiency • Weight • Adjustment is complicated • Aircap Tightening must be important to avoid the leakage

The competition



Xcite gun



Number of parts : 19

Disassembled time : 3.55 min

Comment : The quickest disassembled time – Seat holder torque reduced: less 25% comparing to the MVX gun: easier maintenance

The competition

 **BINKS®** AA1500 gun

Number of parts : 19

Disassembled time : 4.25 min

Comment : the tip easy fall when disassembled



The competition



G15 gun

Number of parts : 13

Disassembled time : 3.45 min

Comment : difficulties to disassembled the needle stop sleeve



The competition

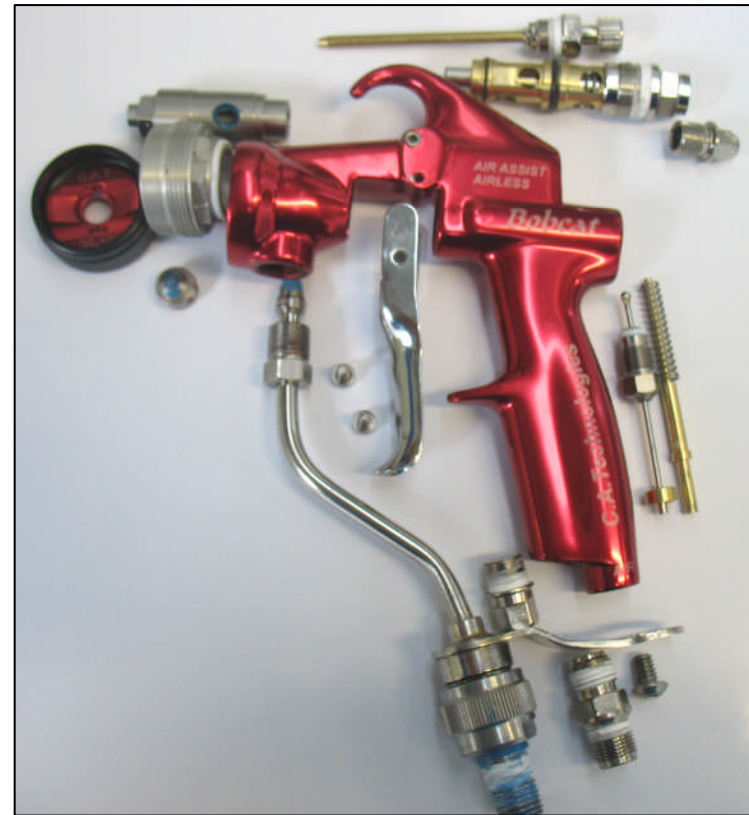
C.A. Technologies

Bobcat gun

Number of parts : 17

Disassembled time : 4.21 min

Comment : Fittings are breakable when disassembled



The competition



AC4600 gun

Number of parts : 17

Disassembled time : 3.51 min

Comment : Needle stop sleeve in plastic: very fragile part



The competition

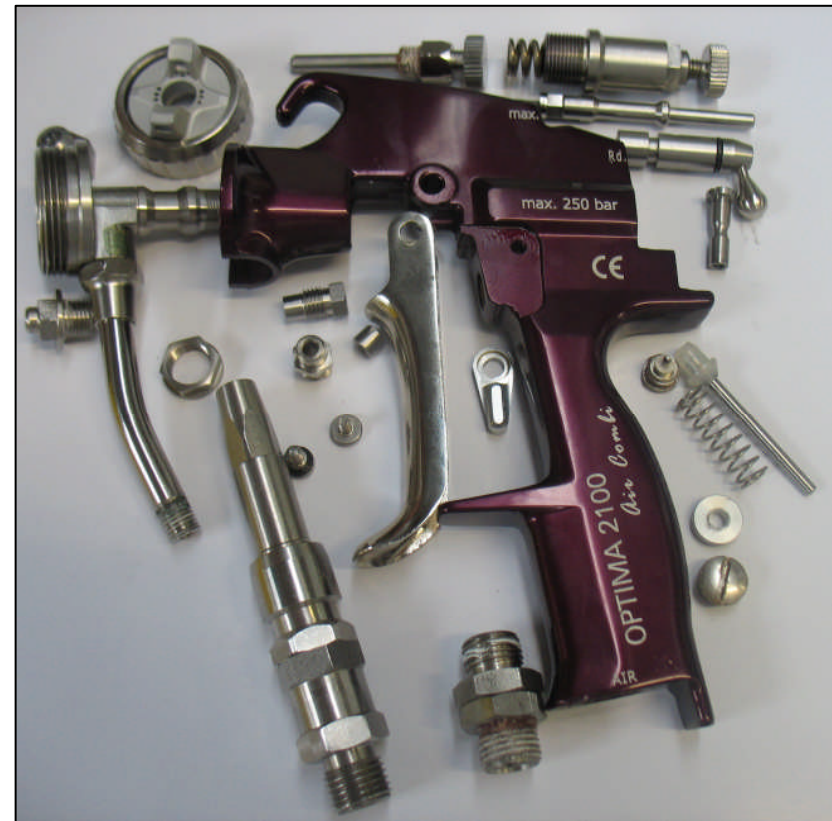


2100 gun

Number of parts : 23

Disassembled time : 4.55 min

Comment : High aircap torque to avoid the leakage – Too much parts



Associated kits

- 12 commercial kits are available :

Référence	Désignation
151260960	KIT XCite 120 + Tête VX24 K HVLP + TUYAUX 7.5M
151260961	KIT XCite 200 + Tête VX24 K HVLP + TUYAU 7.5M
151260962	KIT 10-14 MURALE + XCite 120
151260963	KIT 10-14 PORTABLE + XCite 120
151260964	KIT 10-14 PORTABLE + GODET + XCite 120
151260965	KIT 20-15 MURALE + CANNE + TUYAU 7.5M + XCite 120
151260966	KIT 20-25 MURALE + XCite 120
151260967	KIT 17A2 INOX MURALE + XCite 120
151260968	KIT 40-25 MURALE + XCite 200 + TUYAUX 7.5M
151260969	KIT 40-25 MURALE + XCite 200 + RECHAUFFEUR + CIRCULATION
151260970	KIT 34A2 INOX MURALE + XCite 200
151260971	KIT 20-15F MURALE + CANNE + XCite 120 + TUYAUX 7.5M

The pumps

- The Xcite™ gun can be fed by several pumps of the Kremlin Rexson range



10.14/10.14S



20.15



17.A2 FLOWMAX®



PU 2160 F



CYCLOMIX™ MULTI



PU 3000

Heaters

Xcite™ launching file



AD 60/61

- Aluminium version:
 - AD 60 230V/1500W: 056.126.000
 - AD 61 115V/1500W: 056.126.050

- Stainless steel version:
 - AD 60 230V/1500W: 056.146.000
 - AD 61 115V/1500W: 056.146.050
 - AD 60 400V/1250W: 056.146.070



HP – BP 60/61



ONE-PASS

- 230 V: 056.152.110
- 115 V: 056.151.110

- HP 60 230V/1500W: 056.140.700
- BP 60 230V/1500W: 056.140.100
- HP 61 115V/1500W: 056.140.750
- HP 60 400V/1250W: 056.140.770

Regulators



Manual Airmix®

10-70 b: 155.271.730
10-120 b: 155.271.735
10-120 b version PH: 155.271.770



Piloted Airmix®

Avec pilote:

5-40 b: 155.271.765
10-70 b: 155.271.750
10-120 b: 155.271.755

Sans pilote:

5-40 b: 155.271.760
10-70 b: 155.271.740
10-120 b: 155.271.745

Automatic Airmix® range reminder

- AVX



Fluid circulation in the base plate:
129.695.000 (lateral fluid connection),
129.695.050 (back fluid connection)

Fluid circulation in the gun :
129.695.100 (lateral fluid connection),
129.695.150 (back fluid connection)

- AXC: 129.697.000



For more informations on our products,
Visit our website :

<http://www.Kremlin Rexson.com>

Xcite™ launching file



Thank you for your attention and good sales!

[www.xcite –airmix.com](http://www.xcite-airmix.com)

